

M13DESIGN – M13-RZ/A2M-EK EVALUATION KIT DATA BRIEF

OVERVIEW

With the **M13-RZ/A2M-EK** evaluation board, users will be able to develop and evaluate applications by using the on-board rich features such as camera input, LCD display, ethernet connection any many more with Renesas RZ/A2M MCU device.

FEATURE

MPU

- R7S921058VCBG MCU (BGA324 Package)
- 528MHz, Arm Cortex®-A9 processor
- 4Mbyte Internal RAM

MEMORY/STORAGE

- 64MByte External Serial Flash
- 32MB SDRAM (TSOP54 footprint)
- HyperMCP: 64MB HyperFlash™ / 8MB HyperRAM™
- 16Kb EEPROM
- MicroSD interface

DEBUG

- On board debugger J-Link OB™ (SWD/JTAG)
- Virtual COM

GRAPHICS

- On board 4.3" TFT (800x480px)
- MIPI-CSI2 camera
- 8/10bit Camera Interface (Optional)

OTHER FEATURES

- Ethernet (RMII and PHY)
- Audio Codec with 4 pole 3.5mm headphone connector
- 2 x USB connector (Host/Device)
- 3-axis Accelerometer
- 1 x user LED
- 2 x user switch
- 1 x Reset switch

EXPANSION

- 2 x Digilent PMOD™ Interface
- 1 x Mikrobus™ Interface

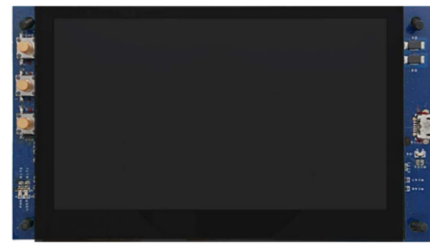
KIT CONTENT

- M13-RZ/A2M-EK board
- Mikrobus™-ESP32 module
- Raspberry Pi Camera Module V2.1

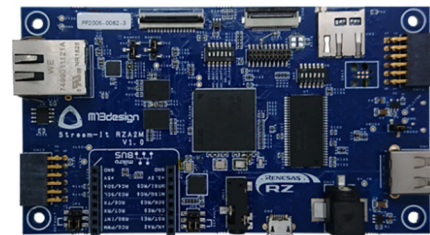
DEMO SOFTWARE

- **HTTPS server with automatic certificate generation using ACME & Let's Encrypt:**
Let's Encrypt is a non-profit certification authority used to secure billion of public websites free of charges. This RA6M3 demo project leverages the ACME protocol to automatically order a certificate from **Let's Encrypt** and get a green padlock in the address bar!
- **Wi-Fi / Ethernet gateway:**
A Mikrobus™ Wi-Fi module is used to implement a gateway with multiple network interfaces. The project demonstrates the simultaneous use of Ethernet and Wi-Fi.
- **Web Radio demo**
- **Camera network streaming demo**

Find out more here: <https://www.m13design.fr/products/M13-RZA2M-EK.html>



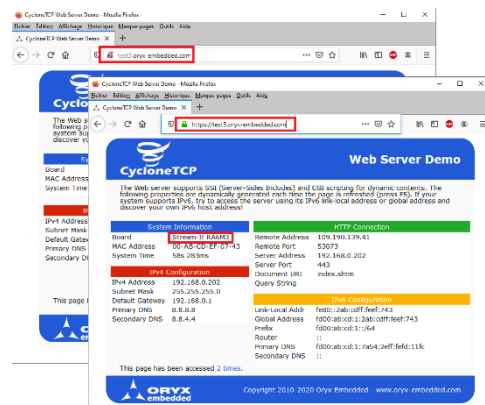
LCD side



Component side



M13-RZ/A2M-EK Board Isometric View



HTTPS server powered by ORYX CycloneTCP / CycloneSSL / CycloneACME